



MONTHLY MEMBERSHIP PROGRESS REPORT

District 25 E

Results as of: 6/30/2015

GMT: THOMAS MATNEY

LOCATION INDIANA

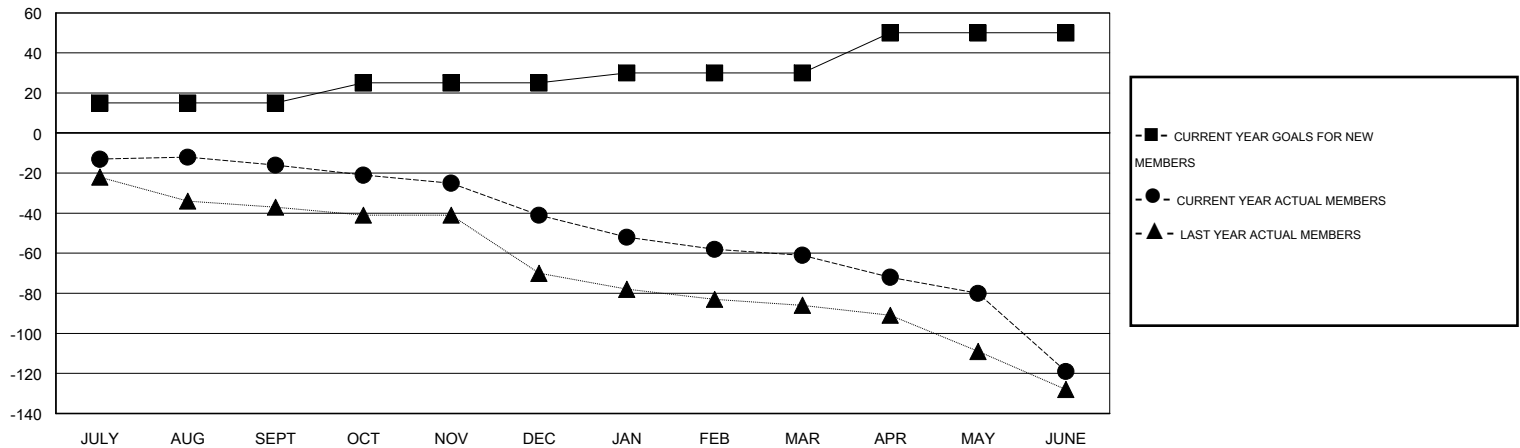
GMT CA 1

Clubs					Members				
RESULTS FOR 2014-2015					RESULTS FOR 2014-2015				
QUARTER	NEW CLUB GOAL	NEW CLUBS	DROPPED CLUBS	NET GAIN/LOSS	QUARTER	NEW MEMBER GOAL	CHARTER AND NEW MEMBERS ADDED	DROPPED MEMBERS	NET GAIN/LOSS
JULY/AUG/SEPT	0	0	0	0	JULY/AUG/SEPT	15	25	41	-16
OCT/NOV/DEC	1	0	0	0	OCT/NOV/DEC	10	24	49	-25
JAN/FEB/MAR	0	0	1	-1	JAN/FEB/MAR	5	32	52	-20
APR/MAY/JUNE	0	0	0	0	APR/MAY/JUNE	20	30	88	-58

GOALS AND ACTUAL NEW CLUBS CUMULATIVE



GOALS AND ACTUAL MEMBERS CUMULATIVE



DROPPED CLUBS: 1	43 CLUBS OF 67 ADDED 1 OR MORE NEW MEMBERS	<u>GENDER DISTRIBUTION</u>	
		MALE	1,040 (65.04%)
<u>DROPPED MEMBERS</u>		FEMALE	559 (34.96%)
DECEASED	25	FAMILY UNIT MEMBERS 558 HEAD OF HOUSEHOLD 271 NON-HEAD OF HOUSEHOLD 287	
CLUB CANCELLED	2		
OTHER	203		
TOTAL	230		

[CLICK HERE FOR HEALTH ASSESSMENT DATA](#)